

ELECTRO-MOTIVE DIVISION GENERAL MOTORS CORPORATION

Parts List No. D1556-E

JOURNAL BOXES

Hyatt 5-1/2 x 10 JMRA Roller Bearing Journal Box
 G18U,G18W,G22W,G22CU,GT22CW-2,G26CW,GT26CW,GT26CU-2 and GT26CW-2 Locomotives

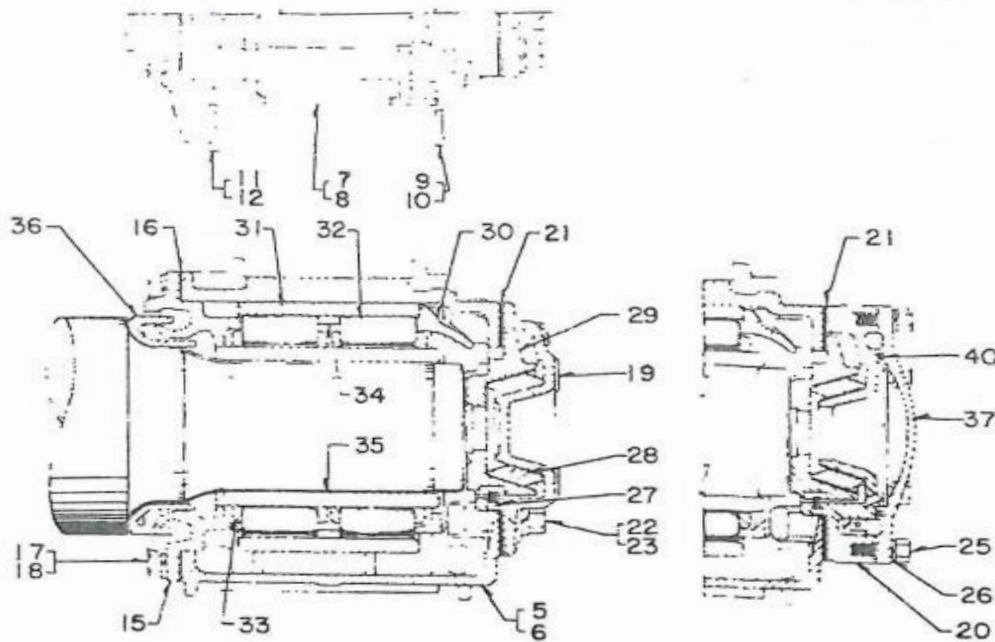


PLATE C1556-E-1

Ref. No.	Part Number	Number Required				Description	Replaces	Locomotive Application
		A	B	C	D			
* 1	7476020	1	-	-	-	BOX .. Journal - Plain	6912905	G18U,G18W,G22W,G22CU,GT22CW-2,G26CW,GT26CW,GT26CU-2,GT26CW-2
* 2	8301052	-	1	-	-	BOX .. Jml. - Pln. - W/manganese liner	----	G22CU
* 3	7476021	-	-	1	-	BOX .. Journal - Combination	6912908	G18U,W-G22W,GT22CW-2,G26CW,GT26CW,GT26CU-2
/ * 4	8301050	-	-	-	1	BOX .. Jml. - Comb. - W/Manganese liner	----	G22CU
# 5	7482088	1	-	1	-	HOUSING ASY. .. Journal box - Replaces 8305975		
6	8303615	-	1	-	1	HOUSING ASY. .. Journal box - With manganese liners		
7	7493646	2	-	2	-	LINER .. Driving face - Replaces 6913033		
// 8	8301075	-	2	-	2	LINER .. Driving face - Manganese		
9	7493667	2	-	2	-	LINER .. Strip - Front - Replaces 8175381		
10	7493672	-	2	-	2	LINER .. Strip - Front - Manganese - Replaces 8301077		
11	7493726	2	-	2	-	LINER .. Strip - Rear - Replaces 8172337		

/ Box 8301050 is difficult to procure. Box 7476021, with carbon steel liners, can be used as a substitute. Box 8301050 can be obtained only by first requesting a formal quotation from Parts Pricing. After receipt of quotation, order must be placed at LaGrange with a note referencing Parts Pricing's quotation.

// Housing 7482088 is difficult to procure. Housing 8303615 with manganese liners, can be used as a substitute. Housing 7482088 can be obtained only by first requesting a formal quotation from Parts Pricing. After receipt of quotation, order must be placed at LaGrange with a note referencing Parts Pricing's quotation.

// Liner 8301075, made of manganese steel, is no longer available. The only substitute available is liner 7493646 which is made of carbon steel.

P.L. No. D1556-E

JOURNAL BOXES

Ref. No.	Part Number	Number Required				Description
		A	B	C	D	
		1	1	1	1	BOX .. Journal
		1	1	1	1	HOUSING ASY. .. Journal box
12	7493813	-	2	-	2	LINER .. Strip - Rear - Manganese - Replaces 8301076
*13	7491829	1	1	1	1	CLIP .. Wiring - Pipe plug - Replaces 7491806
*14	7491806	2	2	2	2	PLUG .. Pipe - 1 M.P.T. - Square head - Replaces 8102042
15	7490632	1	1	1	1	CAP .. Rear end - Replaces 6913026
16	7492208	1	1	1	1	GASKET .. Rear end cap to housing - Replaces 6913038
17	271558	8	8	8	8	BOLT .. 5/8 - 11 x 1-1/2 hex. head - Formerly 8102852
18	8133334	8	8	8	8	WASHER .. Lock - 5/8 - Formerly 103325
19	7491077	1	1	-	-	COVER .. Front - Replaces 8264031
20	7491080	-	-	1	1	COVER .. Front - Replaces 6913031
21	7498210	7	7	7	7	SHIM .. Front cover - Replaces 6913047
22	271611	6	6	6	6	BOLT .. 3/4 - 10 x 2 hex. head - Formerly 6913162
23	8133335	6	6	6	6	WASHER .. Lock - 3/4 - Formerly 103326
*24	8122275	As. Req.				WIRE .. Lock - 14 ga. steel 500 ft.
25	179885	-	-	6	6	BOLT .. Front cover - 1/2 - 13 x 2-1/8 in. long - Formerly 8122222
28	7494211	1	1	1	1	NUT .. Thrust - Resilient - Replaces 6913028
29	7498819	1	1	1	1	BLOCK .. Thrust - Replaces 6913029
30	7496440	1	1	1	1	RING .. Retainment - Replaces 6913027
31	7451293	1	1	1	1	RACE .. Outer - Replaces 6913034
32	7451945	28	28	28	28	ROLLER .. Bearing - Replaces 6913035
33	7451944	2	2	2	2	CAGE .. Bearing roller - Replaces 6913036
34	7451291	1	1	1	1	RING .. Center - Cage spacer - Replaces 6913037
+35	7451292	1	1	1	1	RACE .. Inner - Replaces 6913299
+36	7492453	1	1	1	1	GUARD .. Water - Replaces 6912563
<div> <div>그림5-일반형 축상</div> <div>그림6-축상 하우징</div> <div>그림7-케이지(복열)</div> <div>그림8-베어링/케이지(복열)</div> </div>						
<div> <div>is not used).</div> <div>ADAPTER .. Speed recorder head</div> <div>ADAPTER .. Speed recorder axle drive</div> <div>GASKET .. Cover closure plate, speed recorder head or adapter to front cover</div> </div>						
6+*38	6914293	-	-	1	1	
6+*39	8206729	-	-	1	-	
+ 40	8172334	-	-	1	1	

